

Southern Gulf Islands Arts Council

ANNUAL REPORT

Fiscal Year: 2019



Annual General Meeting

Held electronically due to Covid-19 restrictions

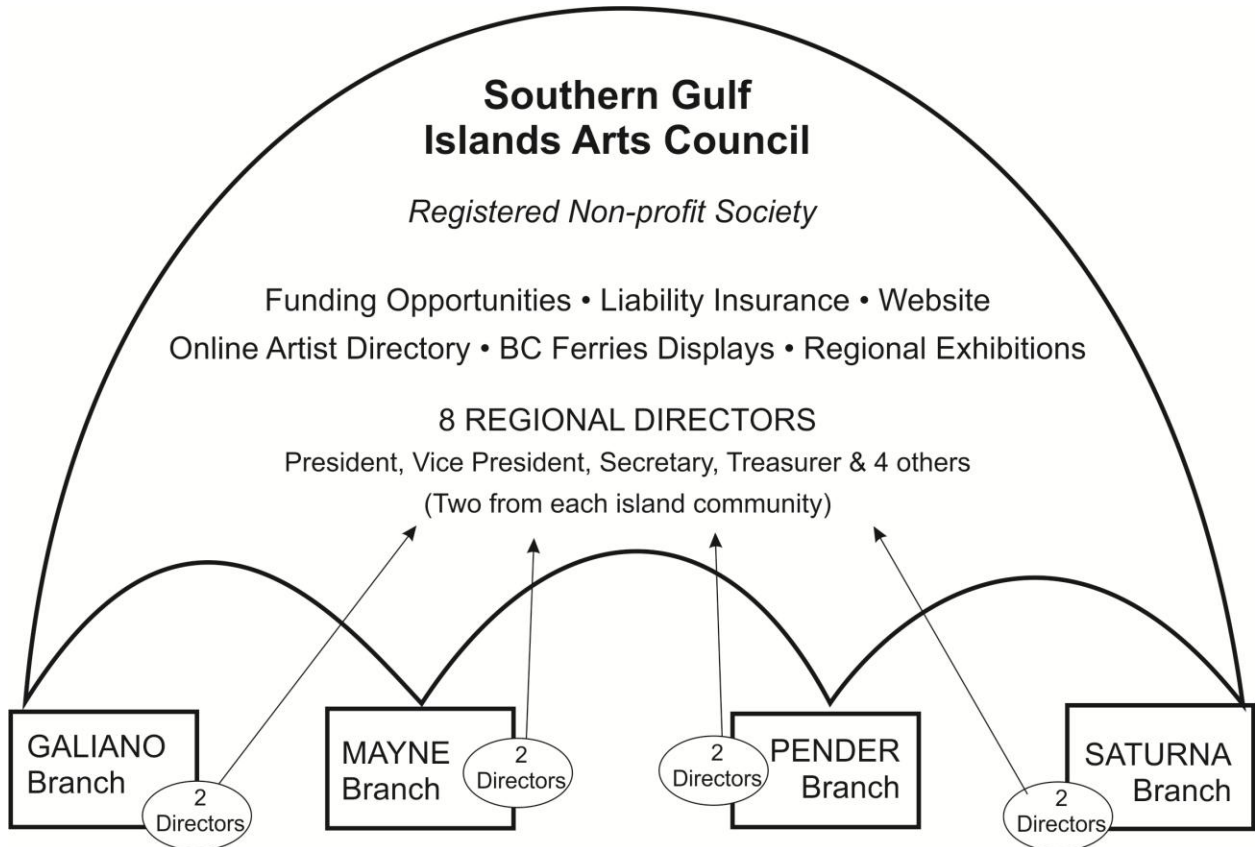
December 15, 2020

Email: sgiartscouncil@gmail.com
Website: www.artsontheislands.org

PRESIDENT’S REPORT

Submitted by Deborah Strong

The process undertaken in 2018 to revise the Southern Gulf Islands Arts Council’s Constitution and Bylaws was completed early in 2019, endorsed by the membership at the Annual General Meeting in April, and subsequently approved by the Province over the summer. Each island community now has the option to form its own Branch and have a solid level of autonomy and financial control while operating under a regional “umbrella” of benefits that includes liability insurance and exhibition opportunities.



The first official Branch of the SGI Arts Council to form was on Mayne Island. In June the Mayne Branch was formed and along with it, a Branch board of directors: Deborah Strong (President), Jennifer Peers (Secretary/Vice President), David Lindquist (Treasurer) and Mary Griffin (Funding Committee Chair). The Mayne Island Branch operates as “Arts on Mayne”. Deborah Strong and Jennifer Peers served on the Regional Board of Directors.

Throughout 2019, Arts on Mayne was very active.

- The Mayne Independent Artists (MIA) approached Arts on Mayne to organize the 3rd Annual Spring Art Gala. Subsequently on the May long weekend the Agricultural Hall was filled with a display of work by 55 of Mayne’s artists.
- A second group exhibition entitled “Summer...” was organized for Arts on Mayne members in the Agricultural Hall on the Canada Day long weekend.

- In June an artist's yard sale took place that featured supplies and furniture donated by the family of Sally Sexsmith as well as additional items from a number of the island's artists. Shavasana Cafe and Gallery provided the venue.
- A lively rotation of art by members of Arts on Mayne was featured in the Library: four themed group shows and two solo shows. There was also a spring show that featured work by the island's youngest artists.
- A grant was received from Mayne Island Parks and Recreation enabling the Arts on Mayne Funding Committee to allocate funding for Life Drawing sessions, a one-day collage-making workshop, and Haiku poetry workshops for children.

The Pender Art Guide was produced through the Southern Gulf Islands Arts Council. Spearheaded by Kenna Barradell, the comprehensive guide showcasing Pender's artists was distributed on BC Ferries and other venues.

BC Ferries continued to provide display space on the Queen of Cumberland and on the Salish ferry assigned to the Southern Gulf Islands route. Despite some challenges coordinating the displays, artists from various islands were able to showcase samples of their work.

Late in the year a committee began planning a regional art show to take place in 2020. "Arts on the Islands" will be open to artists from Mayne, Galiano, Pender and Saturna. The vision is to showcase the region's artistic talent in a live exhibition in the Mayne Agricultural Hall, an on-line exhibition, and a printed exhibition catalogue. The project is being spearheaded by volunteers from Arts on Mayne.

The Southern Gulf Islands 2019 Board of Directors consisted of president/treasurer Deborah Strong (Mayne), vice-president/secretary Jennifer Peers (Mayne), Debra Holmes (Galiano) and Keith Holmes (Galiano). Kenna Barradell (Pender) chose not to stand for election after serving several months in an interim capacity.

TREASURER'S REPORT

Submitted by Deborah Strong

The Southern Gulf Islands Arts Council's financial picture remains positive. A surplus of funds continues to be built by fundraising activities on Mayne Island, and Mayne's remaining Capital Fund, is secure until an appropriate future project can be identified. The Pender Art Guide, the primary activity for members of that island, is self-funding with advertising revenue and participant fees covering the expenses associated with the Guide's production. Activities on Galiano and Saturna were minimal or non-existent in 2019.

Accounting practices that track each island's funds are in place, with each island retaining any surplus funds it generates. The regional expenses of insurance, web hosting, etc. are covered, for the most part, by membership dues although a small shortfall was noted in 2019. Moving forward, membership numbers are expected to increase so it is anticipated that such shortfalls will disappear. A robust surplus of unallocated funds remains in place and can cover these surplus expenses for the time being.

The problem of a lack of an operating budget remains – an issue that was noted in the Treasurer's Report for the 2018 fiscal year. This will be addressed in the 2020 fiscal year.

SOUTHERN GULF ISLANDS ARTS COUNCIL

STATEMENT OF FINANCIAL POSITION

Unaudited

As of December 31, 2019

<u>ASSETS/LIABILITIES</u>	2019 (Year end, Dec 31)	2018 (Year end, Dec
Current Assets		
Bank Account - CIBC	\$11,327.32	\$9,358.00
GIC - CIBC	\$10,096.00	\$10,050.00
Cash	\$206.00	\$266.00
Total Assets	<u>\$21,629.32</u>	<u>\$19,674.00</u>
Liabilities & Net Assets		
Liabilities		
Galiano	\$0.00	\$0.00
Mayne	\$127.00	\$0.00
Pender	\$0.00	\$0.00
Saturna	\$0.00	\$0.00
Total Liabilities	<u>\$127.00</u>	<u>\$0.00</u>
Net Assets		
Galiano	\$0.00	\$0.00
Mayne	\$4,234.00	\$2,540.00
General		
Captial Fund	\$10,096.00	\$10,050.00
Grants	\$1,804.00	\$1,314.00
Cash	\$200.00	\$221.00
Pender	\$13.00	\$0.00
General		
Saturna	\$0.00	\$0.00
General		
Regional	\$5,149.32	\$5,504.00
General		
Cash	\$6.00	\$45.00
Total Net Assets	<u>\$21,502.32</u>	<u>\$19,674.00</u>
Total Liabilities & Net Assets	\$21,629.32	\$19,674.00

SOUTHERN GULF ISLANDS ARTS COUNCIL

STATEMENT OF OPERATIONS (summary)

Unaudited	Year end: December 31, 2019	Year end: December 31, 2018
OPERATING REVENUE		
Memberships	\$1,355.00	\$1,405.00
Pender Art Guide	\$3,508.00	\$2,910.00
Fundraising	\$1,625.85	\$4,491.95
Exhibition fees	\$790.00	\$440.00
Sales commissions	\$649.00	\$59.00
Total Revenue	<u>\$7,927.85</u>	<u>\$9,305.95</u>
OPERATING EXPENSES		
Advertising & Printing	\$594.05	\$331.05
Fundraising	\$0.00	\$1,122.50
Pender Art Guide	\$3,420.48	\$3,073.00
Association Membership Dues	\$130.00	\$180.00
Rental	\$540.00	\$385.00
Insurance	\$925.00	\$1,141.00
Website	\$370.92	\$440.65
Travel	\$83.45	\$365.45
Bank fees	\$122.20	\$115.64
Misc	\$170.12	\$404.83
Total Expenses	<u>\$6,356.22</u>	<u>\$7,559.12</u>
Excess of revenues over expenditures	\$1,571.63	\$1,746.83
GRANT REVENUE		
Mayne Island Parks & Rec	\$1,400.00	\$1,400.00
GRANT EXPENSES		
Program expenses	\$685.00	\$1,566.25
Instructor fees	\$225.00	
Misc expenses	<u>\$910.00</u>	<u>\$1,566.25</u>
Excess of revenues over expenditures	\$490.00	-\$166.25
OTHER REVENUE		
Interest (GIC)	\$46.00	\$50.00

Southern Gulf Islands Arts Council Annual Report – Fiscal Year 2019

SOUTHERN GULF ISLANDS ARTS COUNCIL

STATEMENT OF OPERATIONS (by island)
Unaudited

As of December 31, 2019

Revenue	Galiano	Mayne	Pender	Saturna	Regional	Combined Totals
Memberships	\$0.00	\$0.00	\$0.00	\$0.00	\$1,355.00	\$1,355.00
Pender Art Guide	\$0.00	\$0.00	\$3,508.00	\$0.00	\$0.00	\$3,508.00
Fundraising Income	\$0.00	\$1,625.85	\$0.00	\$0.00	\$0.00	\$1,625.85
Exhibition fees	\$0.00	\$790.00	\$0.00	\$0.00	\$0.00	\$790.00
Sales commissions	\$0.00	\$649.00	\$0.00	\$0.00	\$0.00	\$649.00
Total Revenue	\$0.00	\$3,064.85	\$3,508.00	\$0.00	\$1,355.00	\$7,927.85
Expenses	Galiano	Mayne	Pender	Saturna	Regional	Combined Totals
Advertising	\$0.00	\$546.84	\$0.00	\$0.00	\$0.00	\$546.84
Printing	\$0.00	\$0.00	\$0.00	\$0.00	\$47.21	\$43.00
Fundraising	\$0.00	\$0.00	\$0.00	\$0.00	\$0.00	\$0.00
Pender Art Guide	\$0.00	\$0.00	\$3,420.48	\$0.00	\$0.00	\$3,420.48
Membership Dues	\$0.00	\$0.00	\$75.00	\$0.00	\$55.00	\$130.00
Rental	\$0.00	\$510.00	\$0.00	\$0.00	\$30.00	\$540.00
Insurance	\$0.00	\$0.00	\$0.00	\$0.00	\$925.00	\$925.00
Website	\$0.00	\$137.33	\$0.00	\$0.00	\$233.59	\$370.92
Travel	\$0.00	\$49.45	\$0.00	\$0.00	\$34.00	\$83.45
Bank fees	\$0.00	\$0.00	\$0.00	\$0.00	\$122.20	\$122.20
Misc	\$0.00	\$0.00	\$0.00	\$0.00	\$170.12	\$170.12
Total Expenses	\$0.00	\$1,243.62	\$3,495.48	\$0.00	\$1,617.12	\$6,356.22
Excess of revenues over expenditures	\$0.00	\$1,821.23	\$12.52	\$0.00	-\$262.12	\$1,571.63